



GERMANY :

CONTINUOUSLY TRANSPOSED CABLE - SPOOLS & PACKAGING

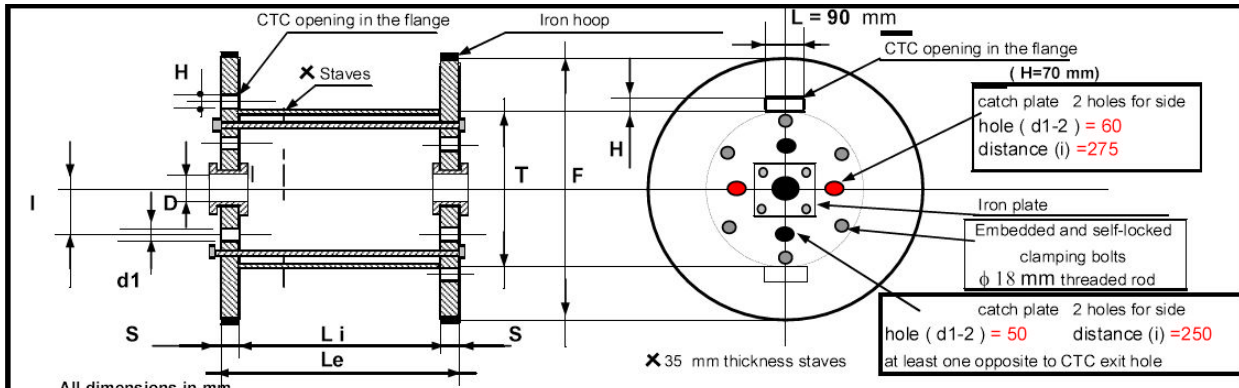
Flange mm	Core mm	Width mm	Traversing mm	Center Bore mm	Volume dm ³	Usable Volume dm ³
1250	900	630	500	82	372	242
1350	800	680	510	82	474	308
1400	900	630	500	82	569	370
1600	1000	760	610	82	747	486
1600	1000	1050	880	82	1078	701

* Other Types on Request.

ITALY :

CONTINUOUSLY TRANSPOSED CABLE - SPOOLS & PACKAGING

Flange mm	Core mm	Width mm	Traversing mm	Center bore mm	Max Capacity Kg
1350	1000	395	270	82	700
1350	1000	615	490	82	1100
1350	900	615	490	82	1600
1650	1290	815	690	82	2100
1650	1000	815	690	82	2900
2000	1400	1015	880	82	4000
1600	1000	350	225	82	1200
1600	1000	520	395	82	2100
1600	1200	1030	895	82	3500



REEL TYPE	CODE	FLANGE DIA.	BARREL DIA.	HOLE DIA.	FLANGE THICK.	INTERNAL WIDTH	EXT. WIDTH	Distance	HOLE	max Kg capacity	Mat. Reel	Protection Type
		F	T	D	S	Li	Le	I	d1			
BAM100/400	F1	1350	1000	82	62	270	395	250	50	700	BAM	Stave Prot
BAM100	F2	1350	1000	82	62	490	615	250	50	1100	BAM	Stave Prot
BAM100/TS	F3	1350	900	82	62	490	615	250	50	1600	BAM	Stave Prot
BAM130	F4	1650	1290	82	62	690	815	250	50	2100	BAM	Stave Prot
BAM130/TS	F5	1650	1000	82	62	690	815	250	50	2900	BAM	Stave Prot
BAM140	F6	2000	1400	82	68	880	1015	250	50	4000	BAM	Stave

NOTE :

- Drums with iron hoop
- Catch plate: 4 holes, 2 for side (at least one opposite to CTC exit hole)
- CTC exit dull hole (No 2 - 1 for side)
- Iron bush
- beech drums with glued hardboard in the internal part of the flanges
- BRANDED TYPE AND PROGRESSIVE NUMBER

PROTECTION TYPE FOR CONTAINER OR AIR FREIGHT DELIVERY

- Stave = 30 mm thickness staves
- Prot = wrapping of Nolcoflex Firm OXYTECH

The supplier is responsibility for the maximum allowable capacity

Working degree	Part		N° 240-02
Material	No parts		Rev. 0 1 2 3 4 5
Fe=Iron G=Glissnot B= binder BA= binder acciaio BAM= binder acciaio masonite C=Plywood FG=Beech		STANDARD DRUMS FOR TRANSPSED CONDUCTORS	
		MOD/15.7	data revision 13/05/2010